

# PREMISE AND PROCESS



# PREMISE AND PROCESS



## **NOTICE WARNING CONCERNING COPYRIGHT RESTRICTIONS**

The copyright law of the United States (title 17, United States Code) governs the making of photocopies or other reproductions of copyrighted material. The University System of Georgia, of which the Georgia Film Academy is a part, is committed to respecting the rights of copyright holders and complying with copyright law. The University System of Georgia recognizes that the exclusive rights of copyright holders are balanced by limitations on those rights under federal copyright law, including the right to make a fair use of copyrighted materials and the right to perform or display works in the course of face-to-face teaching activities. If your use is within fair use, you are not infringing on the legal rights of the owner. While fair use is intended to apply to teaching, research, and other such activities, an educational purpose alone does not make a use fair. If a user uses a photocopy or reproduction of this material for purposes in excess of fair use, that user may be liable for copyright infringement.

# WHAT'S THE BIG IDEA?

1

The **IDEA** is where it all starts

2

What **STORY** do you want to tell?

3

What **IDEA** will you devote 6 weeks or 6 months or 6 years into?

© Michael Luckner





## WHERE DO IDEAS COME FROM?

IDEAS can come from EVERYWHERE

- YOUR EXPERIENCES
- YOUR JOB
- YOUR FAMILY
- HISTORY
- MEDIA
- YOUR IMAGINATION



OFTEN THE BEST STORIES COME FROM THE WORST OF TIMES



FIND WAYS TO QUIET YOUR MIND FOR IDEAS TO GENERATE

© Michael Luckert



# WHERE WILL THE **IDEAS** GO??

Your **IDEA** needs **TWISTS** to **PROPEL** your hero into new directions.

Your **IDEA** should **TRANSFORM** your hero in a realistic way.

Your **IDEA** should **ENGAGE** your audience and keep them on the edge of their seats

© Michael Lucker



# PREMISE



The PREMISE of a film or screenplay is the INITIAL state of affairs that DRIVES the plot.

Most PREMISES can be expressed very SIMPLY, and many films can be identified simply from a short sentence describing the premise.

## FROM IDEA COMES PREMISE

### Your PREMISE:

- Should be set in a **WORLD** that's
- original, compelling, and engaging
- Should have **CHARACTERS** that are
- original, compelling, and engaging
- Should include a **PLOT** that is original,
- compelling, and engaging
- Should include your **PROTAGONIST**
- and his/her **GOAL** in the story.

**WRITE WHAT YOU KNOW** - this keeps your premise **ORIGINAL** because it's **AUTHENTIC**

© Tamlin Hall



# LOGLINES

A **LOGLINE** clearly defines your **PREMISE** in one to two sentences.

A **LOGLINE** can determine if your script is **READ...** or is **NOT READ**

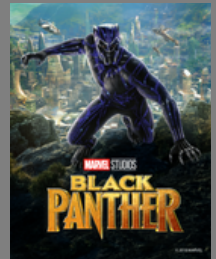


\*Click the image above to go to the YouTube video

\*A copy of the video is also in Google Drive Folder

## SOME LOGLINE EXAMPLES:

T'Challa, the King of Wakanda, rises to the throne in the isolated, technologically advanced African nation, but his claim is challenged by a vengeful outsider who was a childhood victim of T'Challa's father's mistake.



A Lion cub crown prince is tricked by a treacherous uncle into thinking he caused his father's death and flees into exile in despair, only to learn in adulthood his identity and his responsibilities.

Luke Skywalker, a spirited orphan boy, joins rebel forces to fight the evil Darth Vader, to rescue a Princess and the galaxy from the Empire's evil plans.



An orphaned boy enrolls in a school of wizardry, where he learns the truth about himself, his family and the terrible evil that haunts the magical world.

© Tamlin Hall

# LOGLINES

SHOULD INCLUDE:



## CHARACTER

Who is your protagonist?



## GHOST

What personal dilemma  
haunts your character?



## DESIRE

What does your protagonist  
want?



## RESISTANCE

What opposes your  
protagonist from attaining  
his/her goal?



## JOURNEY

What is the world,  
adventure, and chaos?



## CHANGE

How does your protagonist  
evolve or devolve



A close-up of Harry Potter's face, looking slightly to the right with a serious expression. He is wearing his round glasses and a dark green robe. In the background, the Hogwarts castle is visible on a hill under a blue sky.

# CHARACTER

Who is your protagonist?

Your **PREMISE** should always include and describe your **PROTAGONIST**

**PROTAGONIST:** the principal character in a literary work (2) : the leading actor or principal character in a television show, movie, book, etc.

Source: Merriam-Webster

**EXAMPLE** (from Harry Potter)  
**PROTAGONIST:** An orphaned boy

© Tamlin Hall

Harry Potter - Warner Bros ©

# GHOSTS

Our **PROTAGONIST** must have a personal problem that haunts him/her.

Understand your **PROTAGONIST's GHOST** and how it will TRIGGER action in your story

**EXAMPLE** (from Lion King)

**GHOST:** Simba caused his father's death (This is the haunting that makes for an epic story)

© Tamlin Hall

The Lion King - Walt Disney Pictures - 1994 ©



# DESIRE

Hopes and dreams are imperative when developing your **PROTAGONIST**

These hopes and dreams help the writer **DISCOVER** what his/her protagonist **WANTS**.

**EXAMPLE** (from Star Wars)  
**DESIRE:** to rescue a Princess and the galaxy from the Empire's evil plans.

© Tamlin Hall

Star Wars - Lucas Films ©





# RESISTANCE

The **RESISTANCE** will come from  
your **ANTAGONIST**

**ANTAGONIST:** a person who  
actively **OPPOSES** or is hostile to  
someone or something; an  
adversary.

Source: Merriam-Webster

**EXAMPLE** (from Black Panther)  
**RESISTANCE:** A vengeful outsider

© Tamlin Hall

Black Panther (2018)- Marvel Studios ©



A photograph of a museum exhibit featuring Star Wars characters. In the foreground, Luke Skywalker, Han Solo, Chewbacca, and a Wookiee are visible. In the background, C-3PO and other characters are on display. The scene is set in a museum with white walls and railings.

# JOURNEY

The **JOURNEY** is the meat of your story.

Whats the **CONFLICT**? Where's the adventures? **CONFLICT** induces **CHAOS**. **CHAOS** is entertaining and compelling to watch.

**EXAMPLE** (from Star Wars)  
**JOURNEY:** Luke joins rebel forces to fight the evil Darth Vader

© Tamlin Hall

Star Wars - Lucas Films ©

# CHANGE

Great **JOURNEYS**  
see great **CHANGE**

Your  
**PROTAGONIST**  
does not end up  
where they began.

© Tamlin Hall

**EXAMPLE** (from Lion  
King)

**CHANGE:** Simba  
learns and accepts  
in adulthood his  
identity and his  
responsibilities.



The Lion King - Walt Disney Pictures - 1994 ©







# ASSIGNMENT

Choose 2 - 3 of your favorite movies and develop **LOGLINES**

Make sure to include:

**CHARACTER**

**GHOST**

**DESIRE**

**RESISTANCE**

**JOURNEY**

**CHANGE**